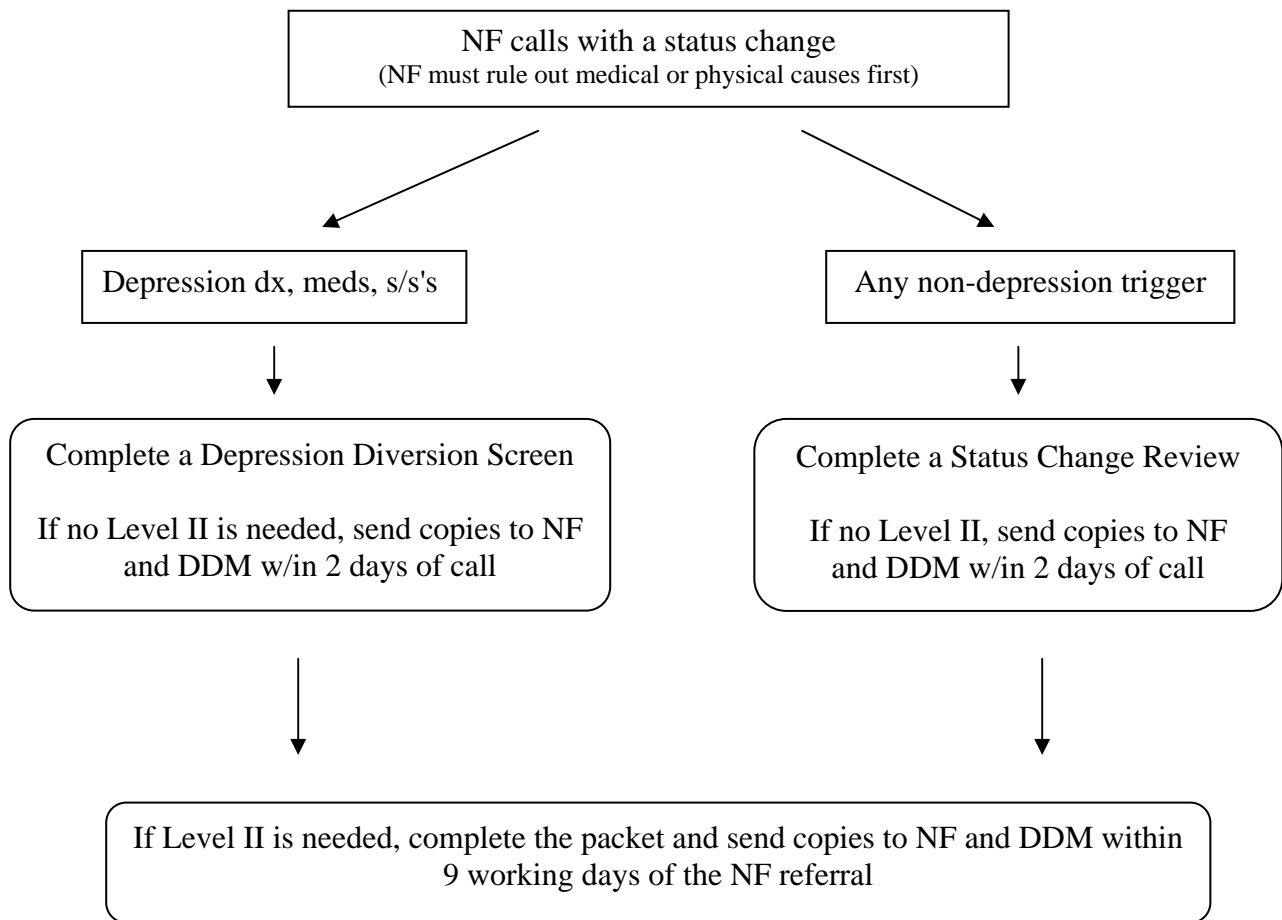


CMHC STATUS CHANGE PROCESS



Remember - Changing medications within classification, i.e. switching anti-depressants or changes in dosages w/ out a significant increase in symptoms DOES NOT trigger a Status Change.

- Psych meds for non-psych uses (Tegretol for seizures, Elavil for neuropathy) DO NOT trigger a Status Change

- Nursing Facilities' Medicaid payment and their compliance with Health Department regulations are dependent upon your timely response to their referrals. They may not get paid if you haven't sent them your PASRR reviews